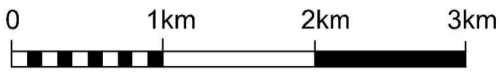


SCALE 1:50,000 5 metre contour interval



Welly Boots



EMERGENCY CONTACT:

+881 622 449 700

WARA Spring 12hr Saturday 7th October 2017

WELLINGTON NATIONAL PARK



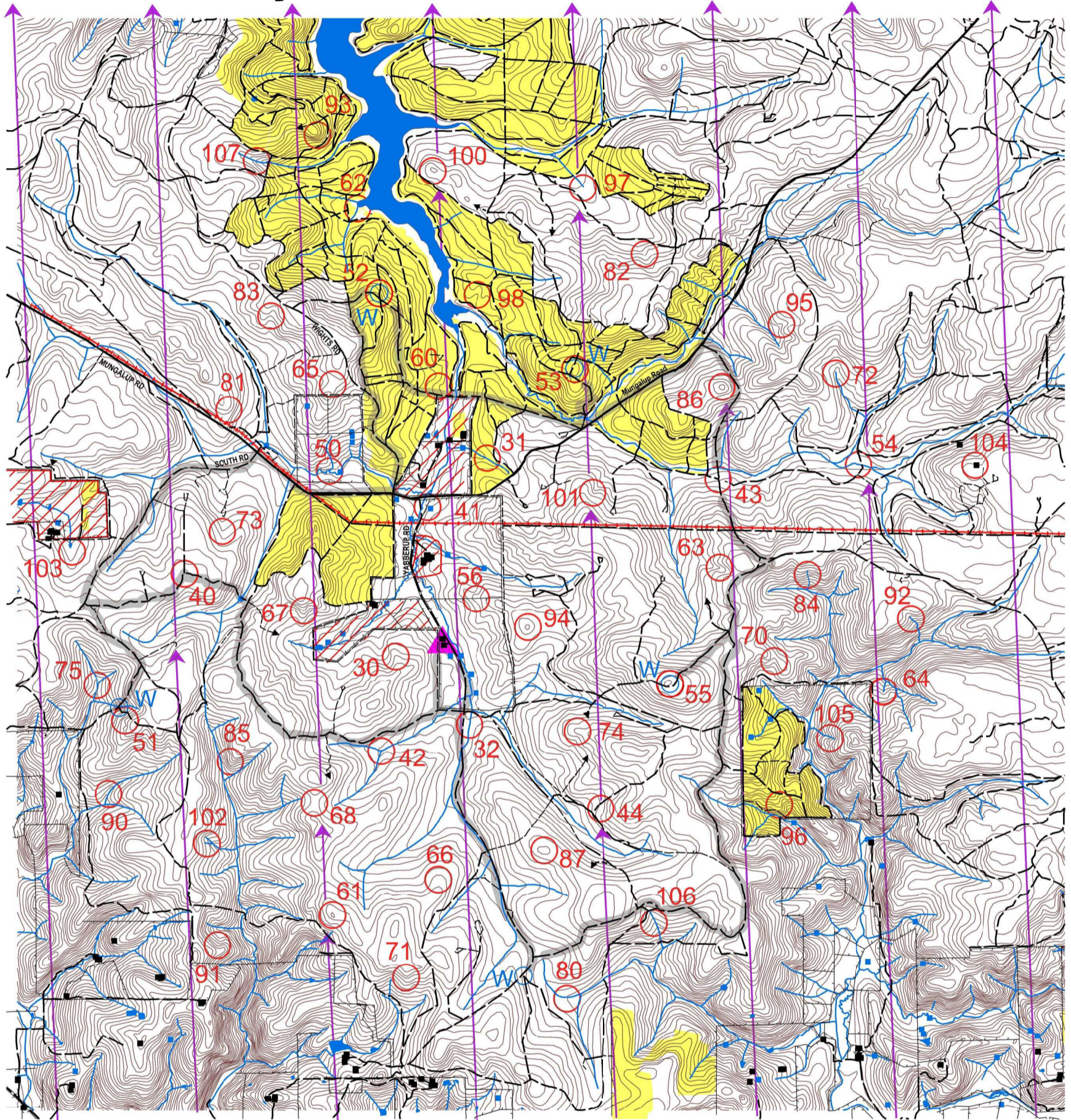
Event Number

SETTER: Jeff 'Legend' Conrades

VETTERS: Vicki Redden
Craig Dermer

Many Thanks to Landowners
Jack and Bill Smith
Lyn and Tony Pitts

Thanks to Leon Price and Peter
Morris Collie PAW



LEGEND

- Building
- Continuations
- Control
- Contours
- Dam
- Fence
- Magnetic North
- Out of Bounds
- Patrolled Road
- Road, Sealed
- Road, Major Gravel
- Road, Minor Gravel
- Watercourse
- Water Drop
- Powerline
- Hash House
- Plantation

SCALE 1:50,000 5 metre contour interval



Department of Biodiversity,
Conservation and Attractions



This map was produced using OCAD 9 by the
Western Australian Rogaining Association. Data supplied
by Landgate and used under copy licence 393/93.
Possession of this map does not give right of entry to this area.

We Boots Spring 12 Hour Rogaine

October 7th 2017

Control	Description	Pts
30	The Spur	30
31	The Watercourse	30
32	The Watercourse	30
40	The Track Junction	40
41	The Small Dam-West side	40
42	The Watercourse Junction	40
43	The Road Junction 30m @ 60 degrees	40
44	A Gravel Pit - SE Corner	40
50	The Watercourse Junction	50
51	The Small Spur (water)	50
52	The Track Bend (water)	50
53	The Knoll (water)	50
54	The Watercourse	50
55	The Knoll (water)	50
56	The Spur /Fence Junction-on a gate	50
60	The Small Gully	60
61	The Knoll	60
62	The Southern Watercourse	60
63	The Gully	60
64	The Watercourse - head of	60
65	The Saddle	60
66	The Broad Spur	60
67	The Spur	60
68	The Saddle	60
70	The Small Gully	70
71	The Spur	70
72	The Watercourse	70
73	The Gully	70

Control	Description	Pts
74	The Spur	70
75	The Watercourse Junction	70
80	The Watercourse (water)	80
81	The Spur	80
82	The Small Gully	80
83	The Gully	80
84	The Small Watercourse	80
85	The Spur	80
86	The Knoll	80
87	The Broad Knoll	80
90	The Watercourse	90
91	The Gully	90
92	The Watercourse	90
93	The Spur	90
94	The Knoll	90
95	The Small Gully	90
96	The Spur	90
97	The Watercourse - head of	90
98	The Gully	90
100	The Knoll	100
101	The Gully	100
102	The Southern Watercourse	100
103	The Gully	100
104	Yabberup Hut- 50m @ 220 degrees	100
105	The Watercourse	100
106	The Watercourse	100
107	The Watercourse	100

Important Information	
Patrolled Roads - every 2-3 hours. Look for the green flashing lights	
Maps & eTags from	0700 Saturday
Briefing	0945 Saturday
Event Start	1000 Saturday
Event Finish	2200 Saturday
Hash House Opens	1700 Saturday
Closes	2300 Saturday
Opens	0600 Sunday
Closes	0800 Sunday
Sunset	1822 Saturday
Moonrise	2000 Saturday
Controls used:	56
Total Available Points:	3850
Tag off at hash house when you return.	
<i>If you need help - go to the nearest WATER DROP or Patrolled Road</i>	
There is no reliable phone service on the course There may be signal on some hilltops.	
Emergency Sat Phone No 881 662 449 700	